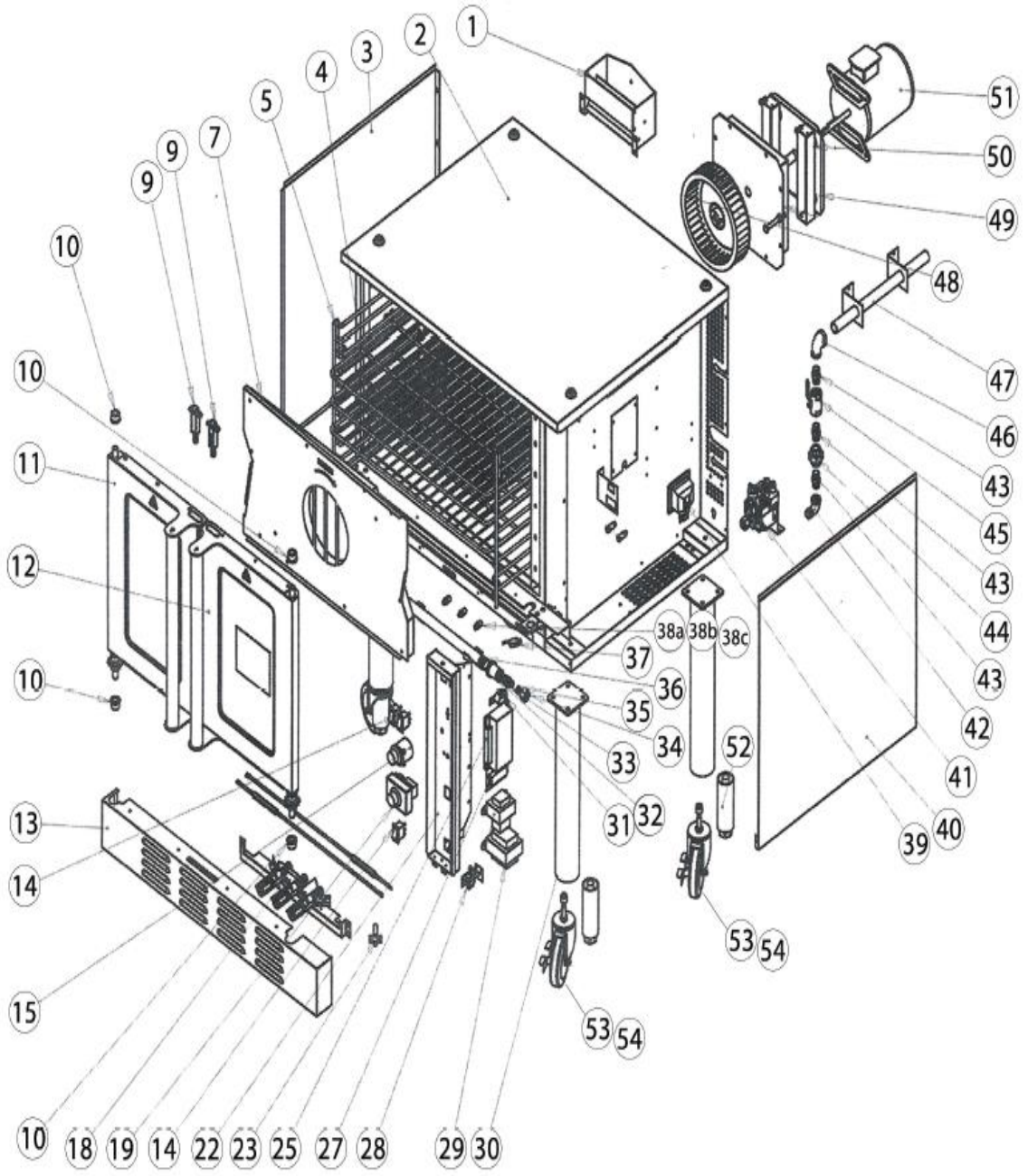




MODEL: 351FGC100(L/N), 351FGC200(L/N)

/// PARTS DIAGRAM



#	Part Code	Our Item #	Description	QTY
1	20165002032	35165002032	REAR VENT (SINGLE)	1
2	20165002001	35165002001	EXTERIOR CABINET	1
3	20265002077	35165002077	LEFT SIDE PANEL	1
4	302110578	351110578	OVEN RACK	3
5	302110577	351110577	OVEN RACK GUIDE	2
6*	20265002039	35165002039	OVEN RACK GUIDE CLIP	4
7	20165002009	35165002009	FAN COVER	1
8*	20265002014	35165002014	FAN COVER STANDOFF BRACKET	2
9	20165002016	35165002016	DOOR LATCH	2
10	302201928	351201928	DOOR SHAFT BUSHING	4
11	20165002014	35165002014	LEFT DOOR ASSEMBLY	1
12	20165002011	35165002011	RIGHT DOOR ASSEMBLY	1
13	20265002079	35165002079	LOWER FRONT COVER PLATE	1
14	301080141	351080141	SWITCH	4
15	301120028	351120028	TIMER	1
16*	301110438+301150066	351110438	KNOB (TIMER/TEMP)	2
17*	301130140	351130140	INDICATOR LIGHT	1
18	20165002019	35165002019	BURNER ASSMEBLY	1
19	301030169	351030169	SOLID STATE THERMOSTAT	1
20*	302170022	351170022	TEMPERATURE PROBE	1
21*	20228051023	35128051023	GUARD TEMP PROBE	1
22	20165002008	35165002008	CONTROL PANEL HOUSING	1
23	302170039	351170039	HOT SURFACE IGNITOR	1
24*	302220004	351220004	FLAME SENSOR	1
25	301150304	351150304	IGNITION MODULE	1
26*	302170039	351170039	MOLEX PLUG - IGNITION MODULE	1
27	301070047	351070047	TERMINALS	1
28	301080079	351080079	DOOR SWITCH	1
29	301100149	351100149	TRANSFORMER	1
30	20365002002	35165002002	LEG ASSMEBLY - TALL (SINGLE UNIT)	4
31	301100086	351100086	BUZZER	1

* Part not shown in diagram

/// PARTS DIAGRAM CONTINUED

#	Part Code	Our Item #	Description	QTY
32	302060028	351060028	STRAIGHT TUBE	1
33	302140077	351140077	STRAIGHT CONNECTOR	1
34	302140080	351140080	COMPRESSION NUT	1
35	302140079	351140079	COMPRESSION RING	1
36	302180512	351180512	MANIFOLD	1
37	301080026	351080026	PANEL SAFETY SWITCH	1
38a	302150177	351150177	BURNER ORIFICE - NO HOLE	3
38b	302150211	351150211	BURNER ORIFICE LP #56 - 1.25mm	3
38c	302150212	351150212	BURNER ORIFICE NAT #47 - 2.00mm	3
39	301130151	351130151	OVEN LAMP ASSEMBLY	1
40	20265002122	35165002112	RIGHT SIDE PANEL	1
41	302220079	351220079	SAFETY VALVE	1
42	302060152	351060152	ELBOW	1
43	302060040	351060040	STRAIGHT PIPE	1
44	302060046	351060046	UNION	1
45	302050076	351050076	BALL VALVE	1
46	302060151	351060151	ELBOW	1
47	302180511	351180511	GAS INLET PIPE	1
48	301010212	351010212	BLOWER WHEEL	1
49	302202143	351202143	MOTOR MOUNTING BRACKET	1
50	302201881	351201881	INSULATION PAD	1
51	301010239	351010239	TWO SPEED MOTOR 115V	1
52	20365002002	35165002002	ADJUSTABLE FOOT	4
53	302090129	351090129	CASTER - SWIVEL - optional	2
54	302090130	351090130	CASTER - LOCKING - optional	2
55*	20165002027	35165002027	STACKING KIT - optional	1

* Part not shown in diagram

PARTS DIAGRAM CONTINUED

#	Part Code	Our Item #	Description	QTY
56*	302050081	351050081	EXTERNAL NAT/LP REGULATOR	1
57a*	20265002034	35165002034	PERIMETER DOOR GASKET TOP	1
57b*	20265002035	35165002035	PERIMETER DOOR GASKET TOP 2	1
57c*	20265002036	35165002036	PERIMETER DOOR GASKET BOTTOM	1
57d*	20265002037	35165002037	PERIMETER DOOR GASKET RIGHT	1
57e*	20265002038	35165002038	PERIMETER DOOR GASKET LEFT	1

* Part not shown in diagram